



IPTS | Products Catalog 2018

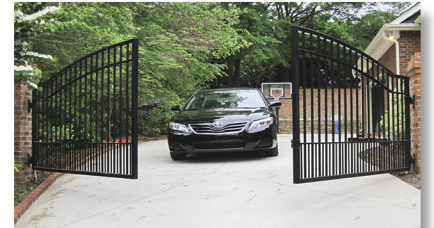
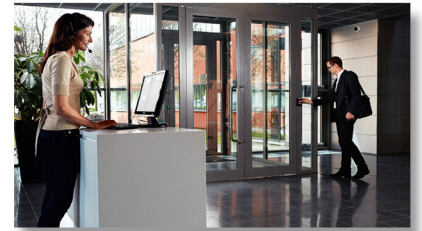
*Innovative Access Control
Solutions For Secure Enviornments*

GateKeeper

GATEKEEPER provides Access Control hardware products supported by innovative software solutions. GATEKEEPER systems are easy to configure, install and implement. The products are easy to use, minimal training required and backed by a total customer support.



CEROSLINE is a smart solution for parking using a unique technologie, Allows the opening of gates / barriers / warehouses. With dedicated camera LPR or with our BLE smart solution. The system is modular and can be customized according to customer requirements.



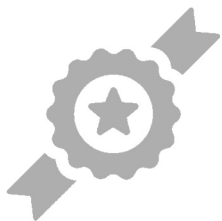
Genesys

A command and control system that integrates security infrastructures with site control systems into a single point of view. The BMS system is a convenient tool for tracking and controlling sites from one or more computer points using intuitive synoptic maps. The GateKeeper is fully integrated with Genesys including intruder detective / CCTV / Fence / Fire / and more.....



SafeKeeper

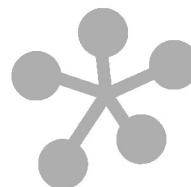
SafeKeeper provides a comprehensive solution for managing lockers storage systems. Fully managed by GateKeeper software, the system is fully modular, and offered in sizes, forms, quantities, type lockers all according to customers' needs. SafeKeeper is designed for use in areas where special security measures are required for valued stored items such as, Weapons, Mobile Devices, Cash, Documents, Luggage etc.



Reliable with
brand awareness



Secure and safe



Wide networks



Friendly to user

NetDX 2.7 Controller

NetDX is a networkable Two-Door Access Controller. The NetDX provides card holder and event memory, communication channels, real time clock, protected inputs, power source and dry contact outputs. Up to 64 NetDX controllers can be connected on one line via RS-485 bus.

Technical Specifications

Card Holder Records - 5,000 on board (with option to 50,000 cards)

Event Transactions - 2,048 (with option to up to 48,000 transactions)

Analog Inputs - 4 protected inputs

Outputs on board - 4 dry contacts, dry contact relay's - 5A NO/NC

Day Zones / Maximum Access Levels - 255 in system

Maximum Time Zones - 255 in system

Indication - Built in with buzzer / communication status 3 color, led/input/output - led's relay status led

Communication Interfaces - RS485/TCP/IP communication interface

Expander protected communication port

AntiPass-Back - Different level's of AntiPass back

Holidays - 365day's each controlled by day zone

Parking System - Functionality built-in

Access Levels - 2 per key

Readers Support - Up to 2

Power Outputs - Protected power source (12 V or 5V) for readers and door strikes

Built in with battery charger 12V

Physical Characteristics

Power Input - 15 VDC, 17VDC, 12Vac

Standby Current - 50mA

Output Voltage - 5VDC or 12VDC, jumper selectable

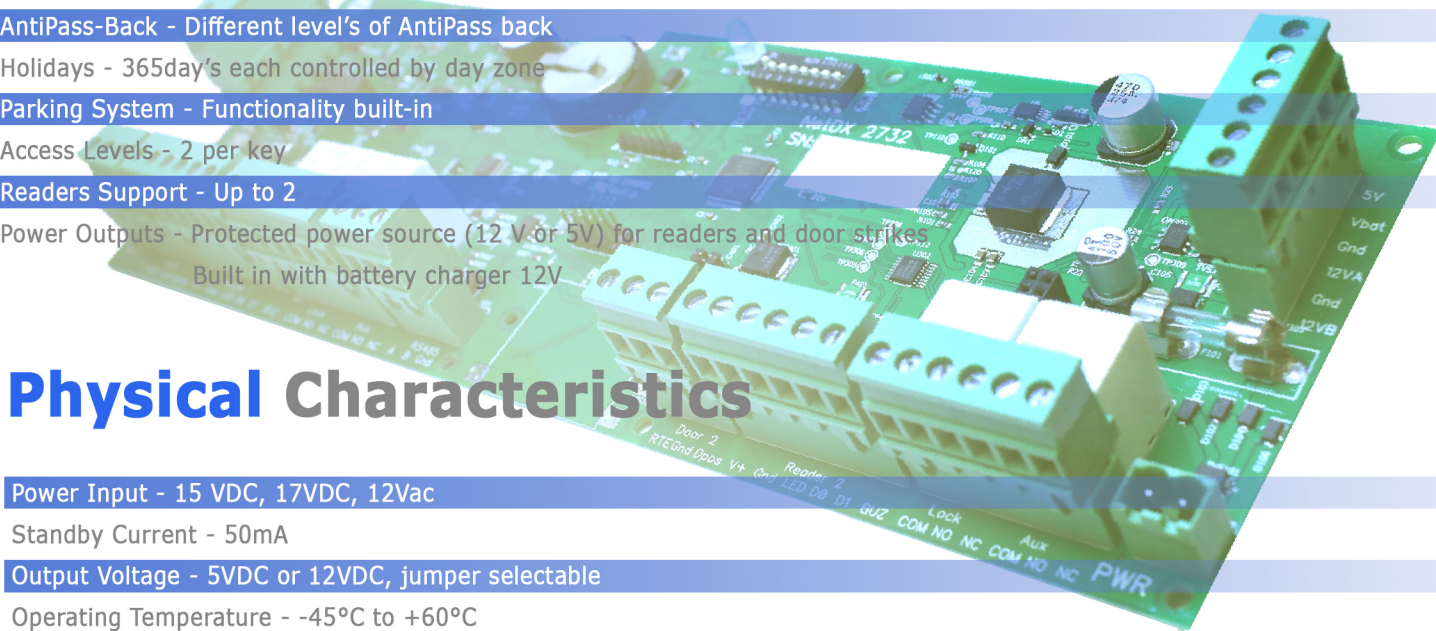
Operating Temperature - -45°C to +60°C

Storage Temperature - 65°C to +80°C

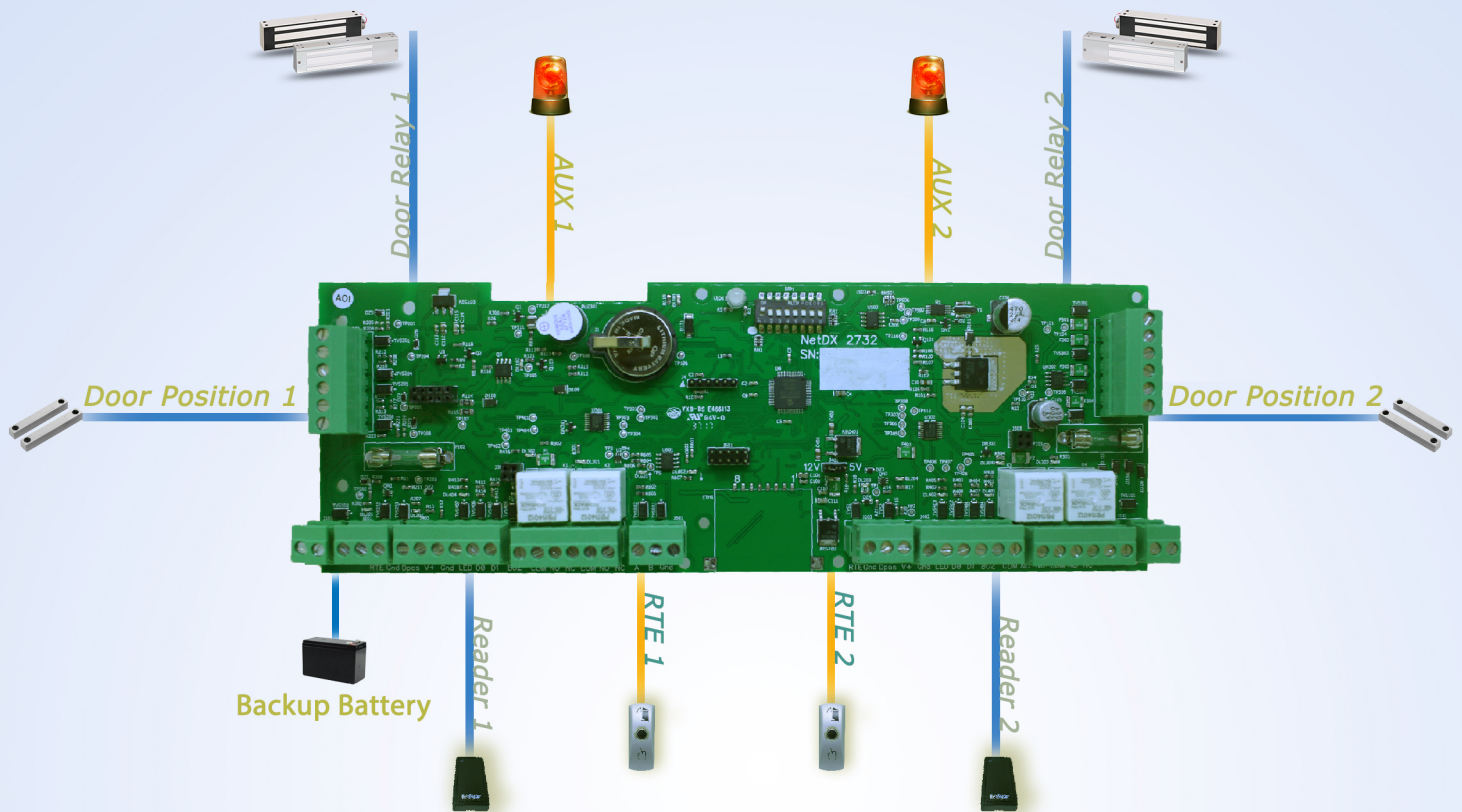
Relative Humidity - 10% - 95% non condensing

Weight - 0.1 KG

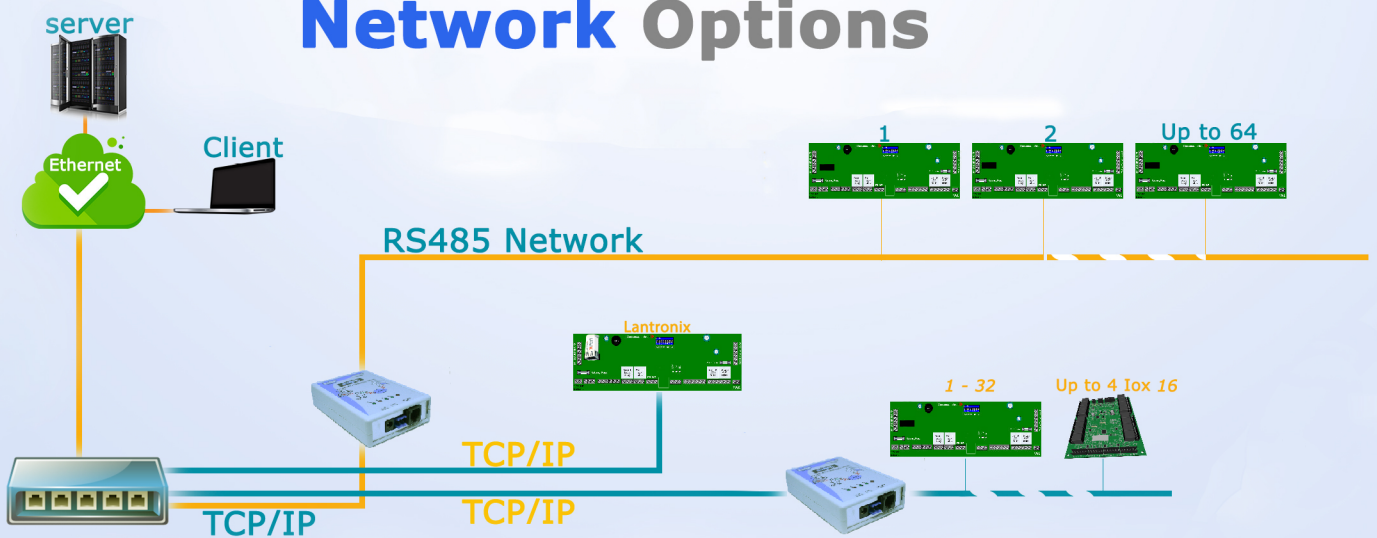
Size - 260mm X 90mm



NetDX 2.7 Controller Connection Chart



Network Options





PT - USBW26

Desktop RFID Card Reader Enrollment

- Frequency: 125Khz/134.2Khz
- Power Supply: +5V DC
- Consumed Current: 70mA
- Operating Distance: 0 - 120mm
- Interface: RS232, USB



PT - PX2608/09

RFID Mini Access Control Reader

- Operating Voltage: 9-16V DC
- Output: WG 26
- Communication Distance: 100M
- Idle Current: <80mA
- Card type: EM (08), MF (09)



PT - AV34

Anti Vandal Reader

Keypad and EM support

- Operating Voltage: 12V DC
- Wiegand Interface: Wiegand 26 bit



PT - RG10

Access Control Reader

- High security encryption
- Output: WG 37bit
- Power Supply: 5-16VDC
- Frequency: 13.56 MHz



PT - FPBE

Bioentry Fingerprint Reader

- Memory: 4MB flash + 8MB RAM
- Card Type: Proximity EM (125kHz), MF (13.56MHz)
- Network Interface : TCP/IP, RS485
- Wiegand output: Configurable up to 64 bits
- Fingerprint Capacity: 10,000 templates (5,000 users)



PT - SA34

Keypad and EM Support

- 2000 Users
- Operating Voltage: 12V DC
- Wiegand: 26 bit
- Lock Output Load: Max 3A
- Alarm Output Load: Max 20A
- Frequency: 125KHz



AS - 802M

Door Release Button

- Structure: Fireproof Plastic
- Current Rating: 3A@ 36VDC Max
- Output Contact: NO / NC / COM



AS - 805

Door Release Button

- Current Rating: 3A@ 36V Max
- Output Contact: NO / COM
- Structure: Alloy Plate, Steel Button



PT - USBRS485

USB to RS485 Converter Cable

- Size: 1.8 meters
- Power Source: BUS - powered
- Output Power Voltage: 4.5 volts
- Max Bus Power Current: 250 mA
- Data Transfer Rate: Up to 3Mbaud



PT - GKBLE

Standalone BLE Smart Reader

- Wiegand 26 Output
- Mobile App (IOS, Android)
- Including 1 Remote control.



PT - LCR

- Magnetic/Lips card reader
- wiegand interface
- Led indication
- ABA format support



RFID USB Reader

- Users RFID fast enrollment via mini USB for mobile.
- Windows support
- Frequency: 125Khz/134.2Khz
- Support Card: Mifare, EM4100.



PT - EM125CH/MF1356CH

RFID Access Control Chip

- Material/Color: ABS / Blue / Black
- Frequency: EM 125KHz / 13.56MF



PT - ETH

Ethernet Converter

- Processor: 12 MIPS at 48 MHz, 22 MIPS at 88 MHz
- Baud Serial Speed: 921,600
- Serial-to-10/100 Ethernet conversion
- Bidirectional: RS485, TCP/IP/UDP protocols



PT - TIBBO

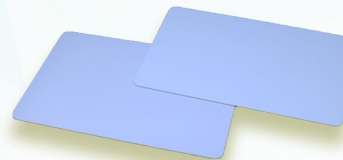
Serial RS485 Ethernet Converter

- Up to 64 NetDX suport via 1 unit
- Bidirectional RS485, TCP/IP/UDP protocols
- RS485: RX +/-, TX +/-
- Power Supply: VDC 16-9



PT - BLERC

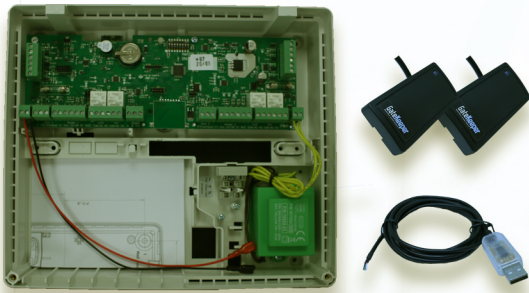
- BLE low energy one touch key holder with battery replacment
- Up to 50m distance



AS - 1001 EM / 1002 MF

RFID Access Control Card

- Meterial: PVS
- Frequency: EM 125KHz/MF 13.56MHz



NetDX 2.7 - 2 Doors KIT

NetDX Access Controller Kit

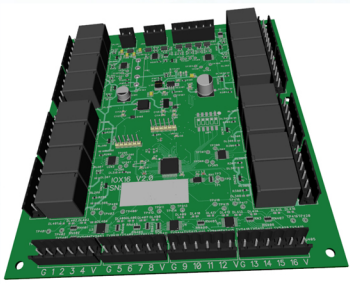
- NetDX kit with 2 mini readers and USB to RS485 Converter Cable



NetDX 2.7 - 2 Doors

NetDX Access Controller

- AC supply 220VAC / 25VA
- Antiflame plastic case
- 2 Doors board (NetDX 2.7)



PT - IOX 16

I/O Expander To Various Systems

- Power Input: 12Vdc to 36Vdc, 9Vac to 24Vac
- Max. Current: 1.5A
- Idle Current: 100mA
- Relays: 16 (24Vdc, 5A)
- Digital Inputs: 16
- Analog Inputs: 4 (12 bits)



Contacts Us

info@ipts-group.com

sales@ipts-group.com

+9723 9699 929

www.accessgk.com

www.ipts-group.com

GateKeeper

SafeKeeper



Genesys